



EAHIL 2016



Biblioteca Virtual
del Sistema Sanitario Público de Andalucía

Knowledge, Research, Innovation ...



15th EAHIL 2016 Conference 6 - 11 June, Seville, Spain

Title: New Directions: Health Librarians in the changing research landscape

Author: Deirdre Andre

Institution: University of Leeds

NEW DIRECTION: HEALTH LIBRARIANS IN THE CHANGING RESEARCH LANDSCAPE

Deirdre Andre
Research Support Advisor SCoReS
University of Leeds Library



UNIVERSITY OF LEEDS

THIS SESSION

- Changing library structures- then and now
- Drivers for change
- Implications of changes for health researchers
- What changes have meant for former health librarians

How it used to be...

- Support structure was subject based
- Faculty Team Librarians were the single point of contact
- Faculty team librarians for Healthcare, Medicine, Dentistry and Psychology and NHS liaison
- Role included:
 - Liaison activities
 - Information skills teaching
 - Collection and budget management
 - Subject knowledge
 - Small amount of research support



Reorganisation by function

Specialist by topic not subject

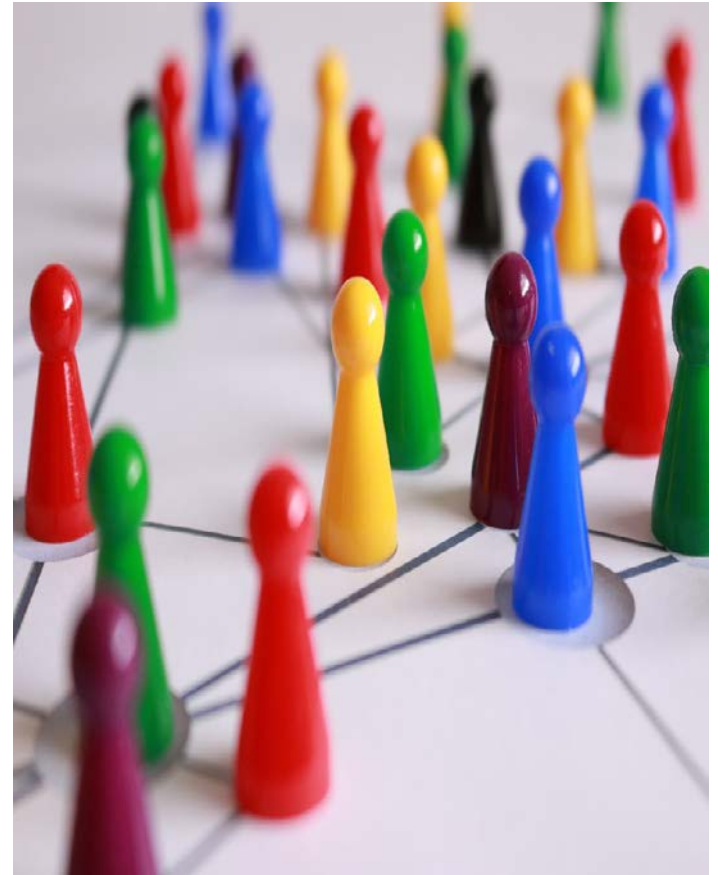
- Teaching and Learning
- Research Support
- Collection development

New teams created from old

- Learning Services (Undergrad/Taught PG)
- Scholarly Communications and Researchers Skills Team (SCoReS)/Research Data Leads (RDL)
- Collection development

Academic Liaison

- Split between Learning Services and Research Support



NEW RESEARCH SUPPORT SERVICE



SCoReS Team
Scholarly Comms and Research Support



Research Data Leeds Team

Research support services

SCoReS	Research Data Leads
Open Access	Data Management Plans
Repositories – WRRO and WREO	Data curation and preservation
Publications database	Storage
Bibliometrics	Data catalogue
REF publication support	Data Repository
Researcher Enquiries/Research webpages	
Researcher Skills Development	
LUCID – paid for literature services	
Digital Publishing	

Research support : external drivers

Academic world becoming more competitive

- Metrics being used by funders/institutions to assess impact of research
- Enhanced information skills needed by researchers in evolving research landscape

UK Open Access Policy developments

- Finch report (2012) on Open Access
- Funders policy mandates on:
 - Open Access publication of research
 - Research Data Management
 - REF requirements on Open Access



Research support: internal drivers

- Existing experience among staff in the library to develop system to support Open Access and research skills development
- Growing demand for REF, Open Access, RDM support
- Technological changes altering traditional role of subject librarians
- No funding within the University for new staff to provide the service



What do the changes mean for health researchers?

- Greater level of support – capacity and expertise exists.
- Holistic research support service for health researchers
- Still have access to librarians with health expertise – many librarians in the team are former health librarians



Developing skills – how we did it

- Had existing knowledge to build on: not starting from scratch!
- Developed knowledge of resources in subject areas beyond health on the job/assistance from previous subject librarians
- Cross team groups with learning services colleagues set up to share expertise/ developments in areas such as business, law, health, referencing and EndNote



New skills for new roles

- Technical skills and knowledge to make the publication system fit for purpose
- Communication and interpersonal skills need for Open Access advocacy and compliance across the university
- Networking skills for Open Access work and for linking to other units in the University providing researcher skills support/services



Reflections on the changes.

Positive!

- Dedicated research support service for health researchers
- Library more outward facing/connected with the University
- Career development opportunity for former health librarians



Next steps for research support

- Ongoing work to ensure academics meet HEFCE OA requirements for REF 2020
- Further development of teaching programmes, e-learning resources/online tutorials
- New dedicated researcher space in Library



Thank you for listening!

Questions??

Contact details

Deirdre Andre d.andre@leeds.ac.uk

