

# New Library and Health Sciences Information Centre in Lithuania



Meile Kretavičienė, [meile@kmu.lt](mailto:meile@kmu.lt)

Library and Health Sciences Information Center, Kaunas University of Medicine, Lithuania



# University Libraries in the 21th Century

- Technology during the last twenty years has had more impact on libraries than it had in the previous two hundred
- Changes in education, clinical care, research, and in the publication of scholarly information— digital publications
- Libraries continue to be built and renovated at a good pace.



# What is the mission of Library today?

- an access point and distribution center for print and electronic information
- a teaching library to support trends in education, research, and service
- a place for groups engaged in collaborative work or learning
- a functional and pleasant workplace for staff and users
- an attractive gateway to the campus and a signature building



# What do users want?

An overview of recent building articles reveals some of the features users want in their libraries:

- access to print and electronic resources
- group study rooms
- collaborative work spaces
- computers with email and Web access
- wireless access
- comfortable furniture as well as tables
- quiet places, no computers
- natural light
- meeting rooms
- teaching and learning spaces
- “beautiful” and functional space



# KMU Library & Health Sciences Information Center

Serves:

- University Students (4 000) & teachers (680)
- University hospital staff (~2 000 beds)
- 4 research institutes
- Physicians, coming for professional development courses
- Visitors from Kaunas health institutions
- Pharmaceutical companies



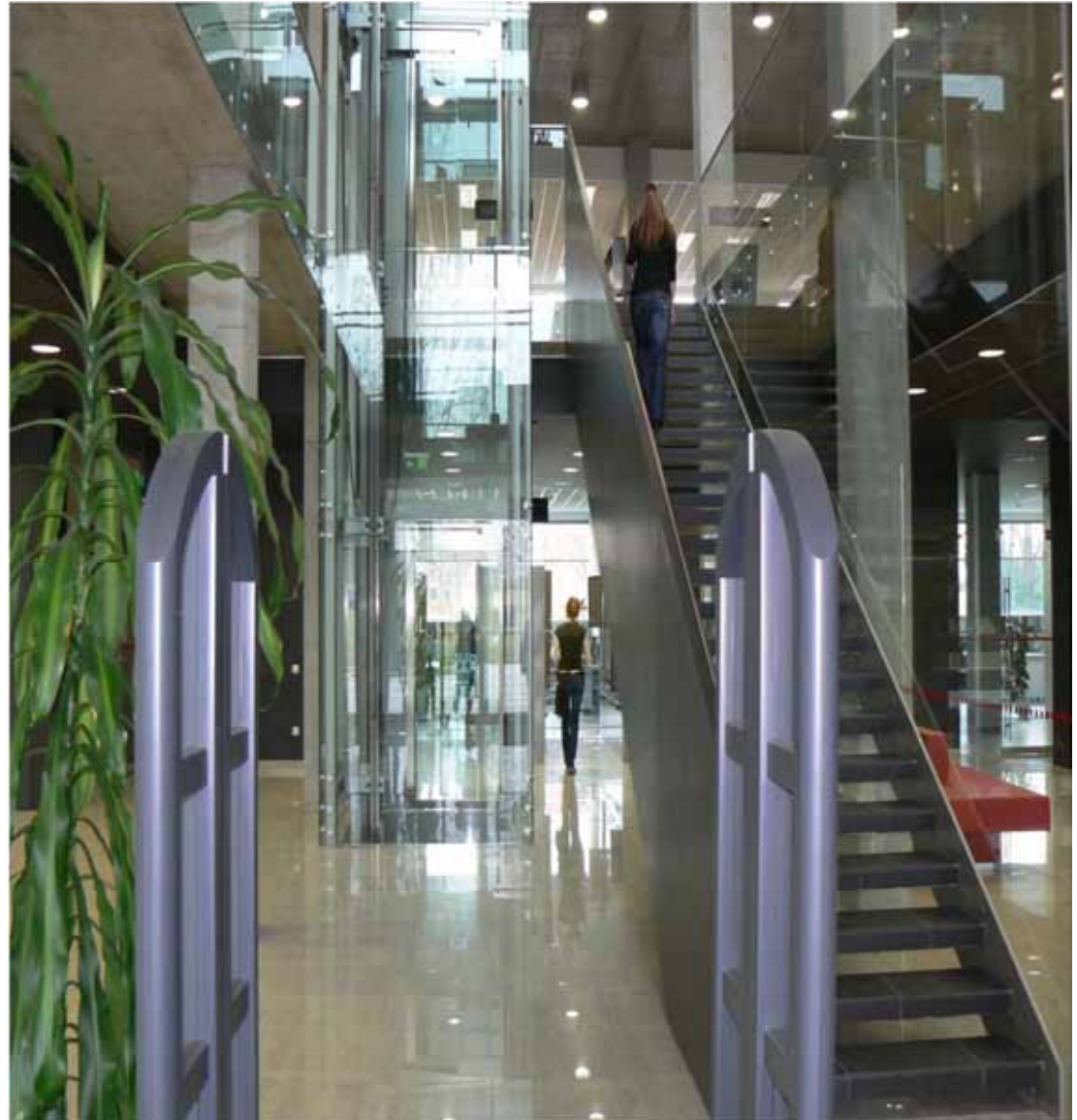
# Goals

- To create a new "hybrid" type advanced University Library - Health Information Center, where traditional and virtual services would be provided
- To transform traditional library into a “learning tool” where learning and research process could be performed at the library – starting from search for information up to the typography and binding of research work



# Objectives for physical library

- Project and build Library according international university standards
- Organize open access to library holdings and periodicals
- Implement security control and self-checking system
- Make and equip problem-based study rooms
- Organize a wide range of services (word processing, copying/printing, binding)
- Auditoriums for user training, workshops, staff meetings
- Elevators for book transportation and for disabled
- Staff facilities (kitchen, shower, rest room)





# Objectives for virtual library

- Extend physical collection with electronic journals, textbooks and electronic reference databases
- Improve LIS (e-catalogue, ordering, reservation, circulation)
- Develop Virtual Library
- Integrate University information resources into National and International databases and search engines.



e.Catalogue  
12 PC



# University Library space standards

Architecture project (2004) made according to:

- **Atkinson standards (UK)** and **DIN 277 (Germany)** for University Library space should be counted by formula:

$1,25 \text{ m}^2 / \text{FTE}^* \text{ number of students}$  plus  $0,2 \text{ m}^2 / \text{FTE}$  number of students for 10 years to future

\* FTE –Full time equivalent

$1.25 \text{ m}^2 \times 2500 = 3\,125 \text{ m}^2 + (0.2 \text{ m}^2 \times 2\,500 = 500) = 3\,625 \text{ m}^2$   
(space for books, users, classrooms, staff)

- According to Atkinson standards 1 seating for 6 FTE students,  $3.25 \text{ m}^2$  space for 1 seating place and 117 vol. for 1 FTE student

Library needs:  $2\,500 : 6 = 416$  seating place and  $416 \times 3.25 = 1\,352 \text{ m}^2$  space for users.

- According to DIN 277 it is required  $19 \text{ m}^2$  for 1 person. KMU Library staff consists of 35 persons.  $35 \times 19 = 665 \text{ m}^2$ .

And under “**The 10 commandments**” by the Harry Faulkner Brown (UK)



# Terms & expenditure

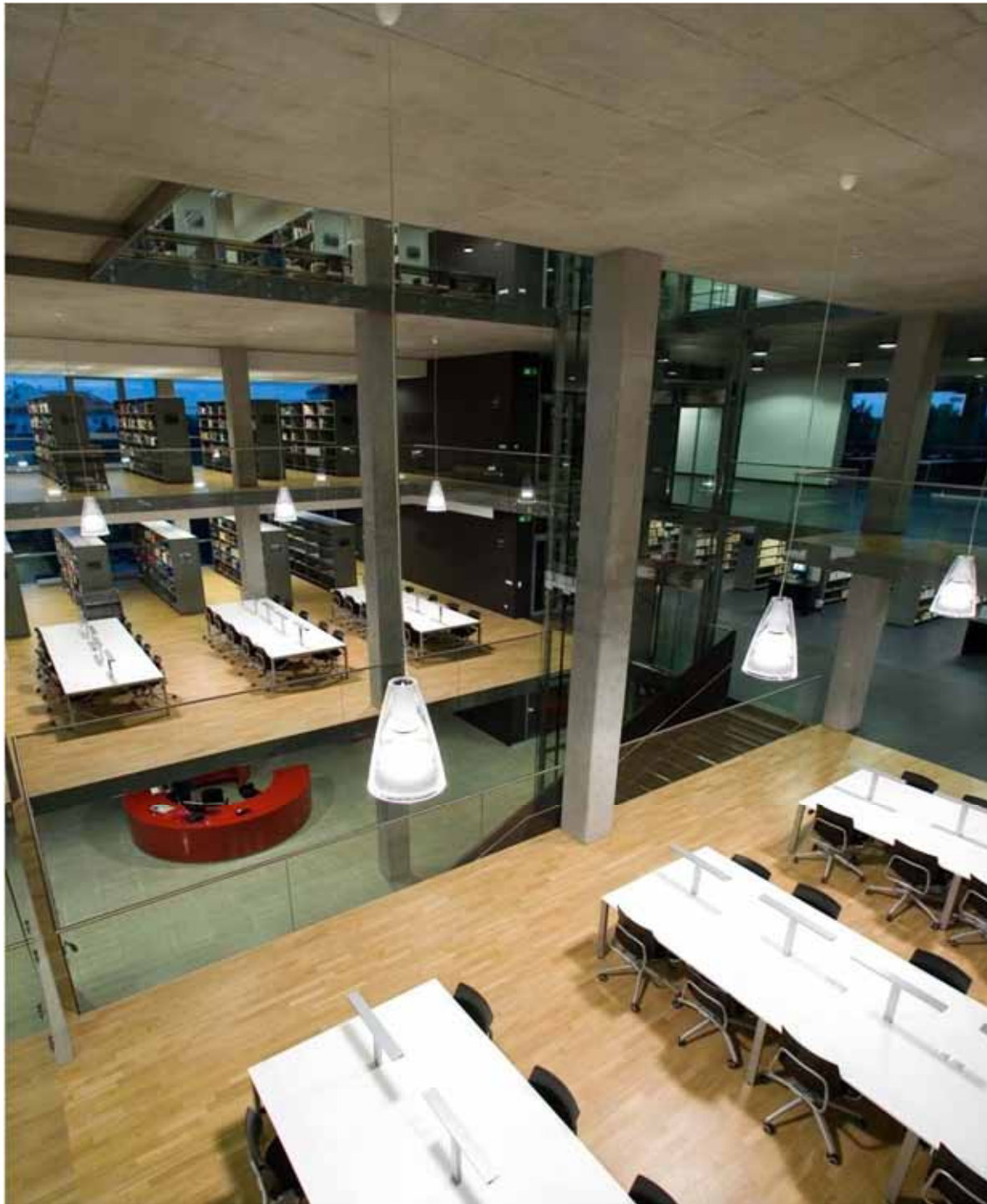
- Architecture project 2004 (G.Janulyte-Bernotienė)
- Building terms 2005-2007
- Moving to the new Library & Opening – 6th of March, 2007
- Building expenditure 9,2 mln Lt (2,7 ml.€)
  - Cost of 1 m<sup>2</sup> - 2257 Lt (654 €)
- Technologies & furniture 3,0 mln Lt (0,87 ml €)



# Figures

- Square 4 076 m<sup>2</sup> , brutto 4 846 m<sup>2</sup>
- Airspace 15360 m<sup>3</sup>
- User area 2 300 m<sup>2</sup>, staff area 450 m<sup>2</sup>
- User seats 400, staff seats 39
- Archive: 512 m<sup>2</sup>, shelves 4 500 m, 550 000 vol.
- Open access area: shelves 2 000 m, 75 000 vol.
- 2x80 m<sup>2</sup> conference and workshop rooms
- 3x40 m<sup>2</sup> group study rooms
- 40 m<sup>2</sup> multimedia room
- Computer lab, 56 seats
- Classroom for user training, 12 PC
- Cafeteria, 40 seats
- Staff kitchenete, shower







# Computer hall (56 seats+12 seats classroom)









# Technologies: Virtual Library

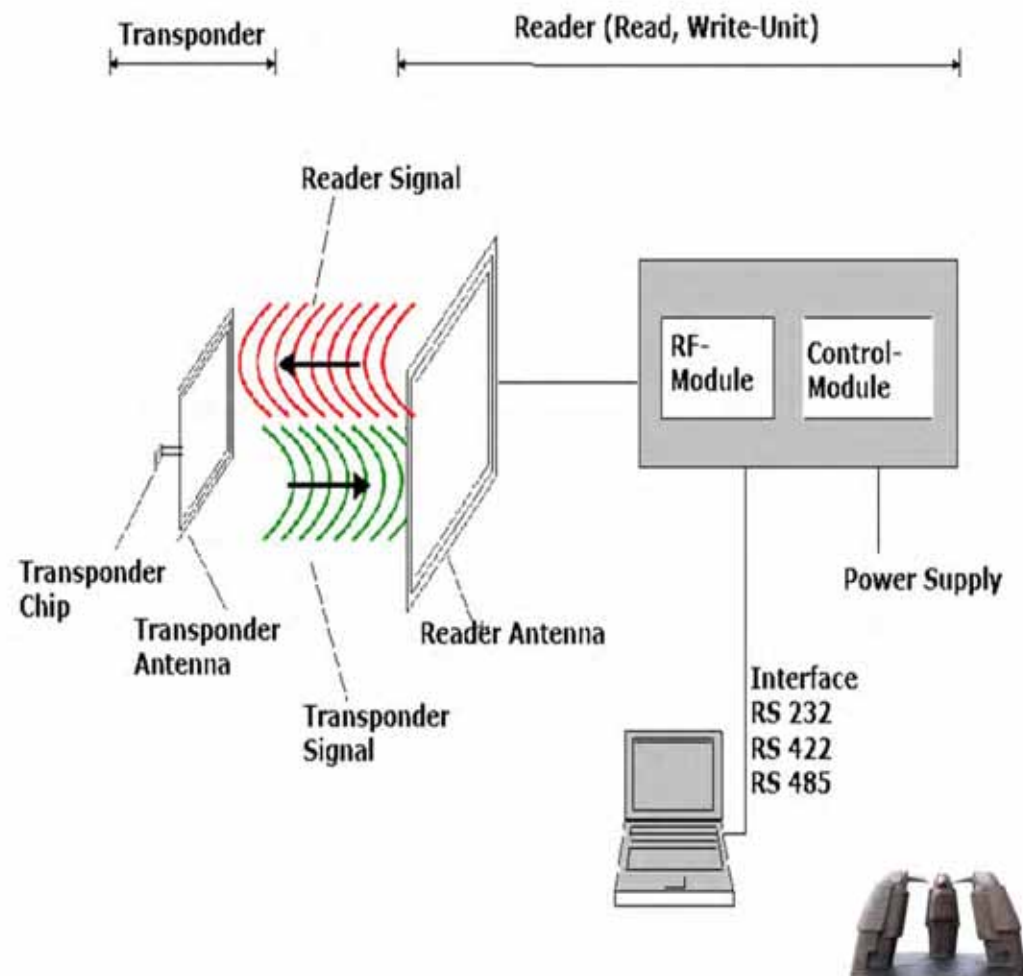
- LIS *Aleph16.02* ensures good cataloguing, search facilities, user-friendly interface
- *SFX* delivers powerful linking services in the scholarly information environment and full text documents
- *MetaLib*<sup>®</sup> (library portal from Ex Libris) enables users to access their institution's e-collections, obtain relevant services, and work in a personalized environment
- PRIMO enables users to search library's entire collection—both physical holdings and e-resources—through a single point of access, and to receive a single, relevance-ranked list of results

Above mentioned *ExLibris* software products enable us to integrate University information resources (DB of scholar publications, ETD, e-catalogue) into National and International databases and search engines (google scholar).



# RFID Technologies

- Is technology that uses radio waves to uniquely identify an object
- Consists of two components: a reader and a transponder. Both have an antenna and an electronic programmable chip



# Advantages

- latest technology for theft detection systems
- reduces the amount of time required to perform circulation operations
- can charge several items at the same time
- tags replace EM security strips and Barcode
- can scan books on the shelves without removing them
- can sort books by category into separate bins



# RFID System components



RFID Self-check



RFID tag



Book return



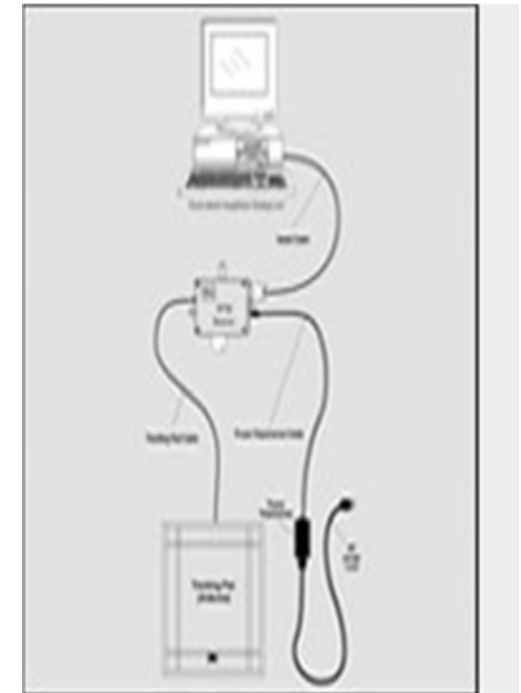
Digital assistant



RFID Security gates

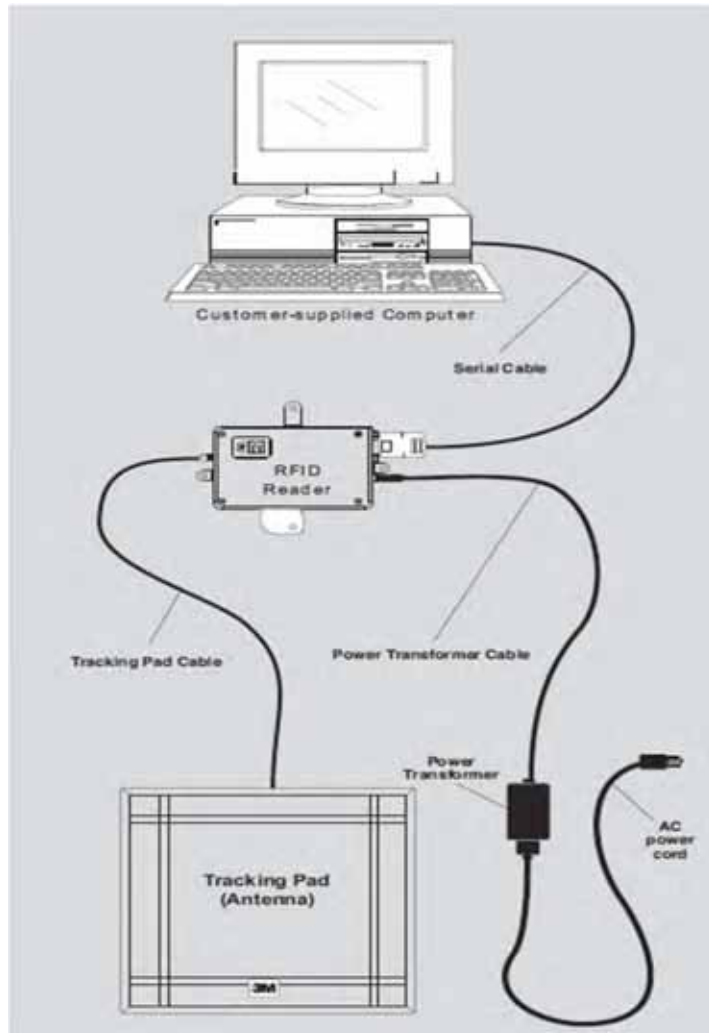


3 way RFID sorter



Workpad station

# RFID workpad station



can be used to convert information from barcode system to RFID, program/reprogram tags

check in and check out books

Several files can be checked out at one time



# Self-service printing/copying

## Gespage/Cartadis



# Services

- Document reservation by Internet
  - Wireless network
  - Self check in/out
  - Interlibrary Loan\*
  - Information searching\*
  - Copying & printing\*
  - Submission of e-thesis and dissertations to ETD IS
  - Poster layout & printing\*
  - Document binding\*
  - Compilation of scientific publications lists (PDB)
  - Educational courses
- \*fee-paying service





# Usage of Library

- Loans 103 000 a year
- Usage at the Library 85 000
- Visits
  - Per year ~290 000
  - Per month ~24 000
  - Per day ~800
  - On Saturdays ~150



# Users' response after 1 year

- Use Library as a place for learning 93%
- 99% use Loan, 90% reads books at the Library
- Use Wireless network 27%
- Use PC for word processing, email, web searching 92%
- Copying/printing service 89%
- Attending training courses 16%
- “I’m using large tables and silence”, “nice view through windows”, “good place between lect.”, “natural light”, “coffee&snaks mashine”..
- Staff service quality: good-83%, satisfactorily-15%, negative -0,9%













# References

- Boss, R. W. RFID Technology for libraries. PLA Tech Notes (May 14, 2004)
- McDonald, A. Space Requirements for Academic Libraries and Learning Resource Centres. London, SCONUL, 1996.
- Quinsee Anthony. After Atkinson. British University Library planning since 1976. London, 1996.  
<http://webdoc.gwdg.de/ebook/aw/liber96/quin.htm>
- Weise, F - Being there: the library as place. Journal of Medical Library Association 2004;92(1):6-13.
- Meile Kretaviciene – experiences from the Library and Health Sciences Information Center, Kaunas University of Medicine





Thank you for attention!



Sculpture by S. Žirgulis "Consultation" in front the  
Library  
Donated by Professor R. Nemickas (USA)