


# **Model of desktop publishing services in the modern offer of an academic library**

**Agnieszka Czarnecka**

**The Main Library of the Medical University of Warsaw**



**What does  
desktop publishing (DTP)  
stand for?**

## Letters to the Editor

### Is the Fetal Heart a Hematopoietic Organ?

Anna Ratajska

Department of Pathological Anatomy, The Medical University of Warsaw, Poland

To the Editor:

The article by Tomanek et al<sup>1</sup> presents well the in vivo data on the requirement of VEGF family members for tubulogenesis and coronary artery formation. The authors observed that VEGF-Trap (a chimera of R1 and R2), apart from precluding formation of coronary arteries, causes a massive accumulation of erythrocytes in the subepicardium and in the interventricular septum. The important finding of this study was that erythrocytes that are components of blood islands derive from epicardial-derived precursors. The authors assume that proepicardial cells include a hemangioblast population. From this observation a conclusion can be drawn that either the proepicardium or the fetal heart exhibits a hematopoietic activity.

Considering the topic of blood island derivation in the embryonic heart I would like to comment that although the derivation of the endothelial cell component in these structures has been proven, the origin of erythrocytes is ambiguous and has not yet been resolved. Quail-chicken chimera and retrovirus-infected proepicardial organ studies revealed that endothelial cells of coronary vasculature derive from the proepicardium and subsequently from the epicardium.<sup>1,2,3</sup> Angiogenic potential of the proepicardium has been confirmed several times.<sup>4</sup> With regard to derivation of the blood cell component, one of the theories implies that fetal heart hematoblasts (erythroblasts) derive in situ from migrating angioblasts or hemangioblasts.<sup>5</sup> This situation would be similar to that seen in developing yolk sac, indicative of the presence of a presumptive hemangioblast.<sup>6</sup> An article by Kattan et al<sup>7</sup> indicates that commitment to the hematopoietic lineage appears to precede the formation of blood islands in the fetal quail heart. Thus, blood island formation in the fetal heart would be preceded by hematopoiesis, which would not preclude a possibility of hematopoiesis taking place in the fetal heart!





fig. 1

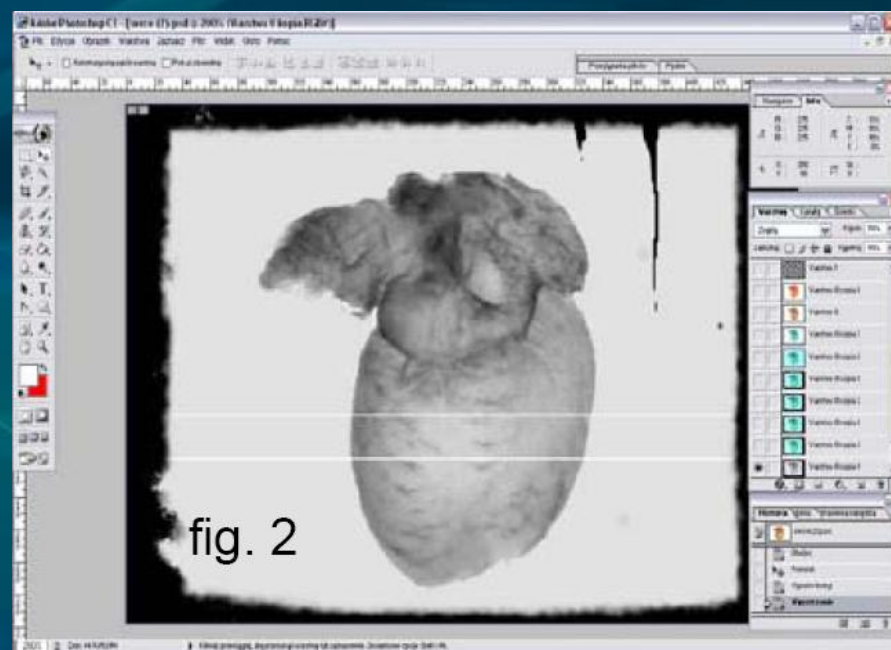
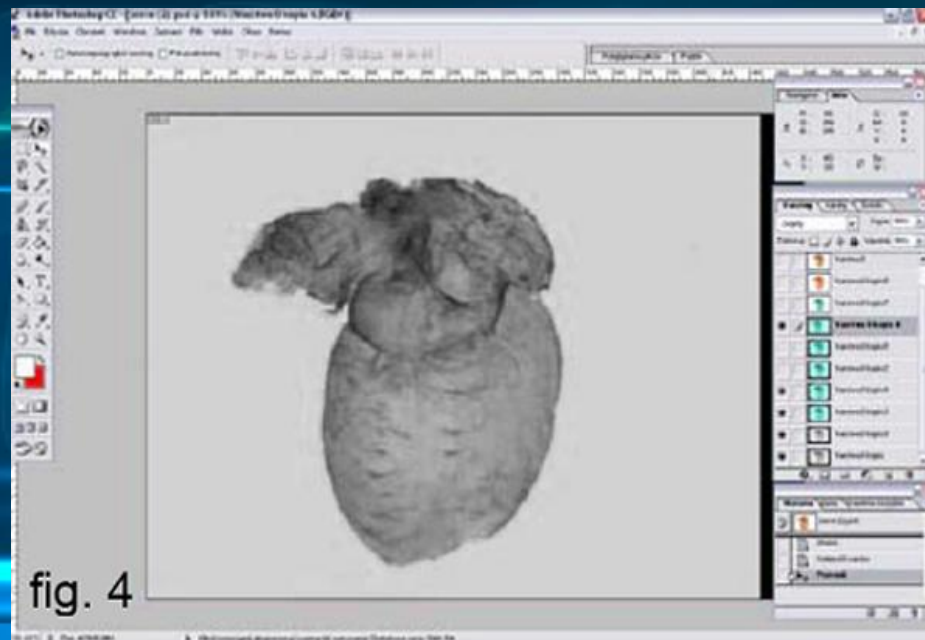
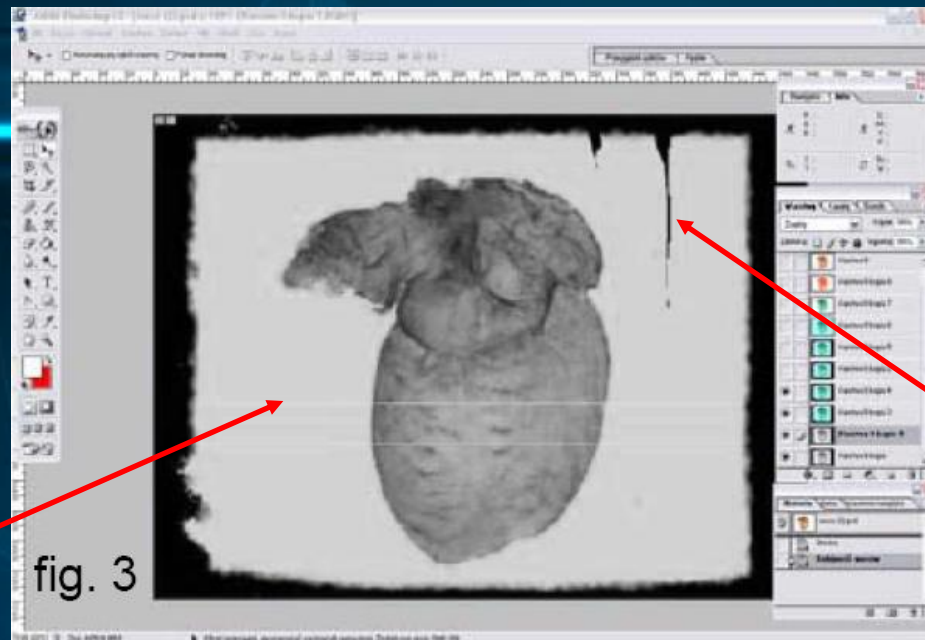


fig. 2





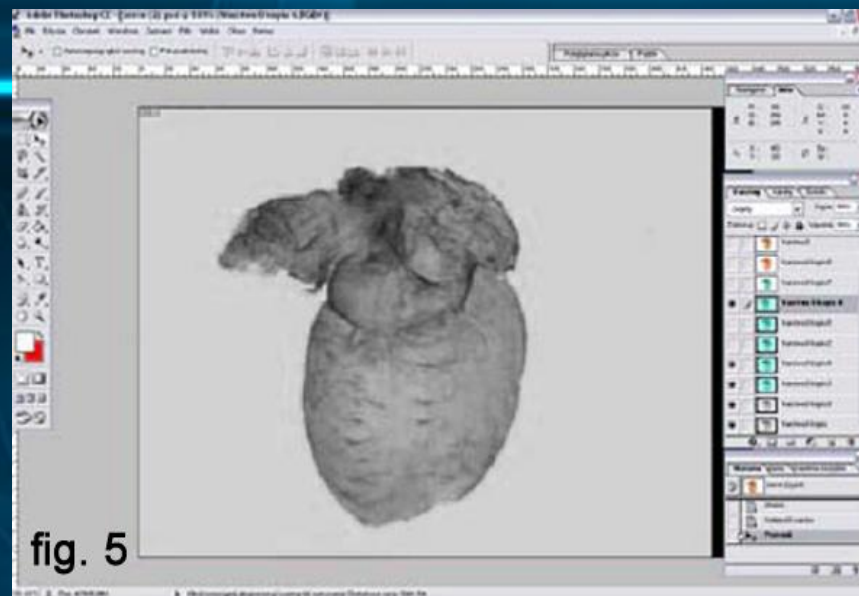


fig. 5

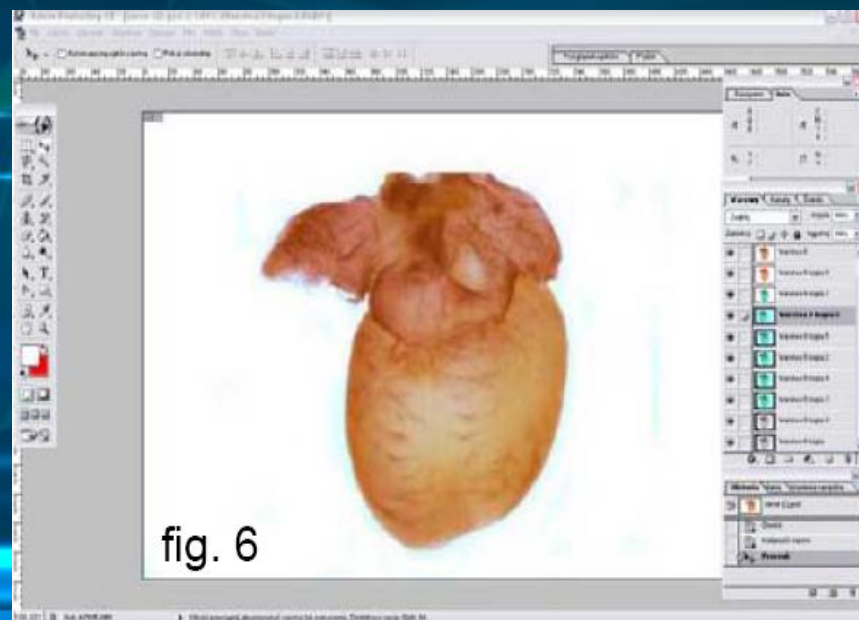
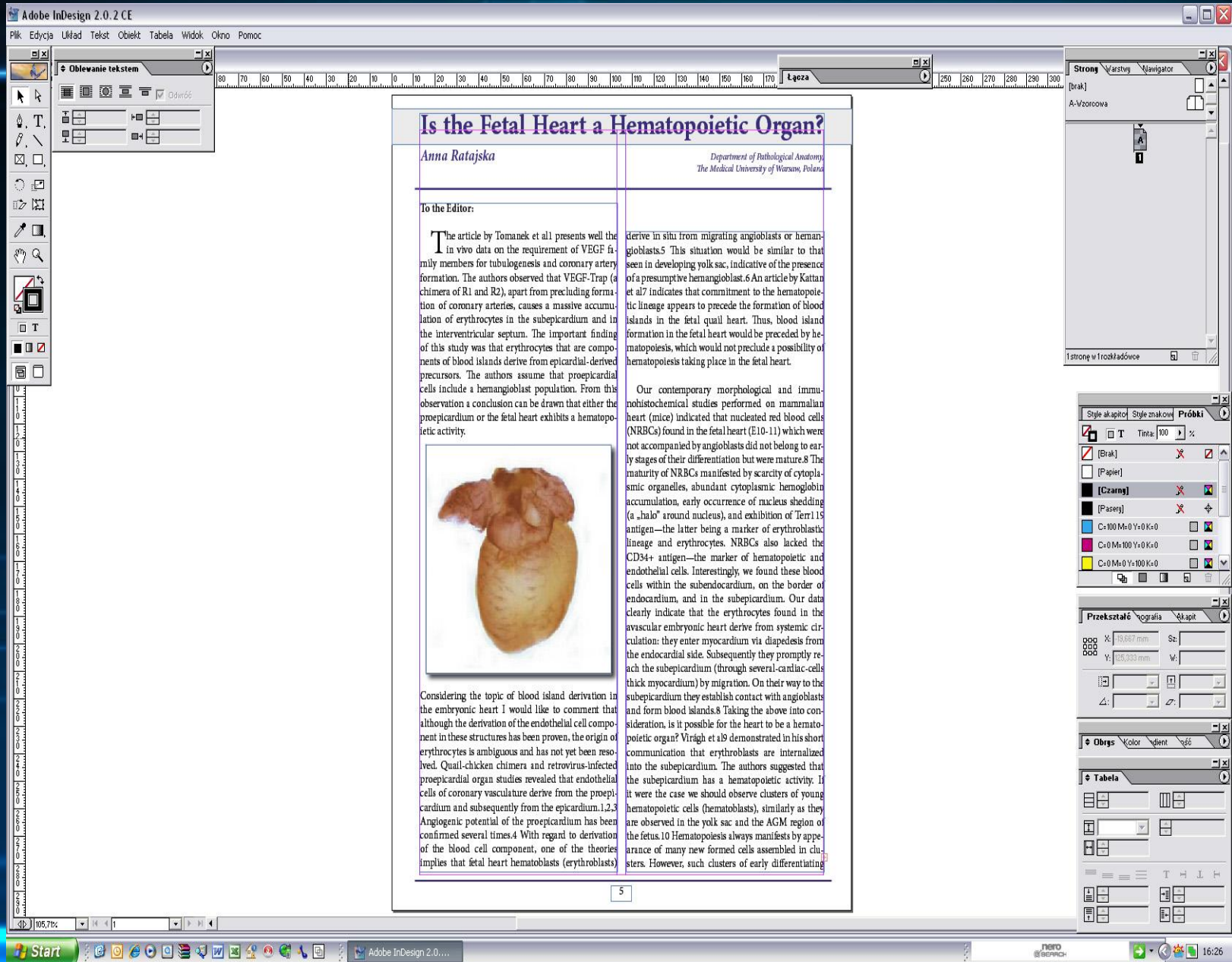


fig. 6





What contributed to the preparation  
of a library DTP studio model?



# The Main Library of the Medical University of Warsaw

## Library of the Center of Biostructure Research (CBR)

branch library

branch library

branch library

branch library

branch library

### The services provided by the CBR library in DTP area, in the years 2005-2007

- scanning
- basic processing of graphic materials
- help in preparing multimedia presentations
- conversion of DOC files into PDF files
- making and editing PDF documents

# **The elements which we needed to prepare the library DTP studio model:**

- establish the reasons for the growing interest in gaining help in the area of desktop publishing
- gain respondents' opinion about establishing a library DTP studio
- establish the range of the service of the DTP library studio
- establish the organization scheme of the DTP library studio
- establish the needed equipment and programs for the DTP library studio
- specify the right specialist trainings for the employees of the studio
- establish the costs of the implementation of the project

# **Methods, which we used in order to gain the necessary data**

- unonymous questionnaire among a hundred readers of CBR library
- interview with employees from three local DTP centers
- analysis of the offers given by companies which provide specialist trainings in DTP
- analysis of the offers given by companies which supply computer equipment and specialist software

# **The reasons for the growing interest in gaining help in the field of DTP services**

- the low level of independence of the respondents in the DTP
- the high percentage of persons unsatisfied with the recieved help in DTP
- respondent's poor programming background (graphic applications) in students group
- the low capability of using graphic applications in research workers group



# **Advantages which the respondents noticed for themselves in creating a library DTP studio**

- getting access to professional servicing
- improvement of quality of the prepared materials
- shortening the time of preparation of the project
- the possibility of giving a professional order
- the possibility of preparing the paper in one place
- the possibility of leaving the paper in the hands of people who have the knowledge of how a scientific paper should look like

# **The services provided by a library DTP studio**

- **Scanning**
- **Graphic processing of images**
- **Preparing a multimedia presentation**
- **Computer typesetting**
- **Preparing a graphic project**
- **Using special programs for creating a bibliography**
- **Converting files into other formats**
- **Preparing papers for print at the printing-house**
- **Color prints**
- **Binding**
- **Saving files on some kind of data carrier**

# **The employees of the library DTP studio**

- **person responsible for contact with the customers**
- **graphic designer**
- **specialist in computer typesetting**

# **The accommodation of the library DTP studio**

- **The reception**

separated from the rest of the studio

designed in concern about the comfort of the customers

- **Graphics workplaces**

separated, quiet room

right kind of lighting

possibility of darkening the room



# Problems with the realisation of the project

- gaining the financial means

EQUIPMENT					
two computer graphic workstations	scanner	printers: laser color, laser black and white	color xerox, binder	cash register	9250 €
computer workstation for the receptionist					
SOFTWARE					
programs for graphics and computer typesetting:	3 MS Office packs	extra font set	program for making bibliographies	program for invoices	5425 €
two packs: Creative Suite 3 Design Premium CorelDRAW Graphics Suite X3					
SPECIALIST TRAINING FOR EMPLOYEES					2 000 €
EXTRA MATERIALS					
color model	typographics rulers (for measuring the size of fonts)	graphic catalogues			250 €
SUM =					16 925 €

# **Problems with the realisation of the project**

- **gaining the financial means**
- **unstable incoming of orders, disproportional to the financial capability of the studio**
- **cutting down of the library space**
- **cutting down of the library staff**

# **The advantages of the implementation of the project**

- **boosting the library's share in the educational and scientific process of the Medical University of Warsaw**
- **boosting the competitiveness of the Main Library of the Medical University of Warsaw in the local library environment**
- **ensuring library services connected with DTP area**
- **extra earnings for the library**

# **The perspective of the development of the studio**

- **digitalization of the collection of the Main Library**
- **accessing a group of workers qualified in the DTP area**
- **preparing 3D graphics**
- **collaborating with consultants (medical statistics, lexical and syntactical correctness)**



# **Model of desktop publishing services in the modern offer of an academic library**

**Agnieszka Czarnecka**

**The Main Library of the Medical University of Warsaw**

**[agnieszka.czarnecka@ib.amwaw.edu.pl](mailto:agnieszka.czarnecka@ib.amwaw.edu.pl)**