

PRESENTATION FOR

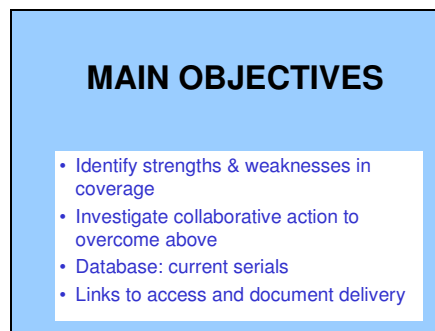
HLG & EAHIL Conferences



FOREWORD

Hello, my name is Amanda Briant and I am the project officer for the Biomedical Collaboration in London: mapping resources for collaborative collection management, survey of current serials. As you may be aware this project is part of the BL Co-operation and Partnership Programme, BLCPP for short. The leading institution for this project is Imperial College, who employs one full time Project Officer, to carry out the main work required for the project. There is also a project team which I am part of and the team includes Project Head Janice Yeadon, IT Officer Mark Fisher, IT Consultant Chris Awre & On Site Supervisor Susan Howard.

To begin with I will give a brief introduction as to why this project was initiated detailing the main objectives, then provide an outline of what the project is concerned with, what its future objectives are, with a summing up of the main points and finally, the progress that has been made so far.



INTRODUCTION

As you are all aware, there are real problems of cost involved when purchasing new materials, especially in a climate of very finite budgets. For libraries to be able to upkeep the essential core materials for the users' needs for teaching, research, learning & professional practice has become one of the great juggling acts of the 20th & 21st centuries. The high costs of maintaining subscriptions for serials, has forced many libraries to cancel large numbers of them, just so they can provide the core materials and thus reduced the range of subject content to the user.

Therefore there has been a great decline in the scope and currency of information within biomedicine available to individuals and the academic and professional communities.

MAIN OBJECTIVES

The main objectives then for this project are, to broaden the range of current serials within biomedicine, medicine and science in the partner libraries by, creating a database to encompass the current serials data, including links to access and document delivery policies, carry out an overlap study of the current serials, highlighting the strengths and weaknesses in coverage and this would lend support for the development of a collaborative collection management policy.

It has been established that only a cross sectoral collaborative approach can help provide a solution to the above problems and as the nature of this project is cross sectoral it should extend the coverage of serials available.

OUTLINE

This project then, is concerned with providing a means, to which libraries can provide a far wider choice of literature for their users', mainly in the subject area of biomedicine, but also expanding to science and medicine.

PARTNERS

- British Library
- British Medical Library
- Imperial College
- King's College, London
- Kings Fund
- Queen Mary's College
- Royal College of Nursing
- Royal College of Surgeons
- Royal College of Veterinary Surgeons

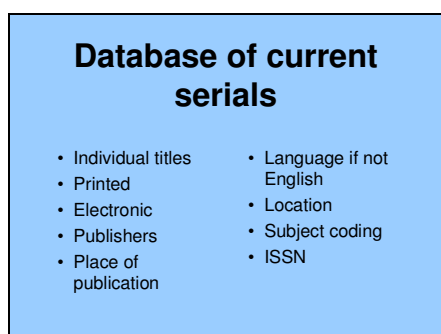
PARTNERS

- Royal Pharmaceutical Society
- Royal Society of Medicine
- St George's Hospital Medical School
- University College London
- Eastman Dental Institute
- Institute of Child Health
- Institute of Neurology
- Institute of Ophthalmology

Thus a comprehensive survey of serials of the above mentioned literature has been carried out at 17 libraries in the London area that are partners within this project.

As you can see from this slide the survey includes a wide range of institutions ranging from Higher Education (UCL St George's), an independent health charity the Kings Fund, Professional bodies such as the BMA RCS and the National Library of the UK, the British Library. The survey will also include research into what free journals there are available on the World Wide Web.

The project is geared towards enhancing the partner libraries ability, to meet their users' needs with a collaborative effort, in supplying their biomedical serials data that can be accessed via a database, which will be available on the World Wide Web.



This database will include a large number of current printed and electronic journals in biomedicine, science and medicine, and will form the basis of a searchable tool, that will enable library staff to see at a glance, what each of the partner libraries have in stock.

The types of information that will be included in the database will be, individual titles, printed and electronic, publishers, place of publication, language if not English, location, subject coding and ISSN

This searchable tool, will enable library staff in a short amount of time, to locate what journals are in stock at the other sites and make available this material, to the users' from the libraries involved. As the BL hold one of the largest journal collections in the UK, there is a high demand to access their collections and it was felt important within this study to assess alternative holdings to theirs. This database will also provide Web links to the partners' access and document delivery policies.

SEARCHABLE WEB DATABASES

- Current Serials Database
- In format of catalogue
- Journals available
- Location
- On WWW
- Links to Access & Document Delivery
- Who has access
- Services available
- On WWW

The proposal here is to grant access to the partners' current journal collections by document supply or personal access within the rules of the partner institutions. To achieve this proposal the project will need to look at existing access schemes such as the University of London and the M25, plus investigate thoroughly the access and document supply policies of the individual partner libraries. The project will also explore the possibilities of how the present access schemes (M25) and policies of the partner libraries could be complemented and extended, to include non Higher Education Institutions.

This will not be an easy task, as access policies are very complex and of which I have had personal experience, from just working on the issue desk at Charing Cross Medical Library.

Importantly it would be a waste of resources, if the project didn't examine those needs of the user, that are not met locally and how well existing document delivery services such as HAYS, BLDSC and LAMADA can satisfy demands. The aim here would be for the partner libraries to provide an inter-site document delivery service that would seek to incorporate a rapid response to demand.

In essence then, there will one **database**, which will be in the format of a catalogue, purely to see what's in stock and where, that will provide web links to the access and document delivery services of the partner libraries.

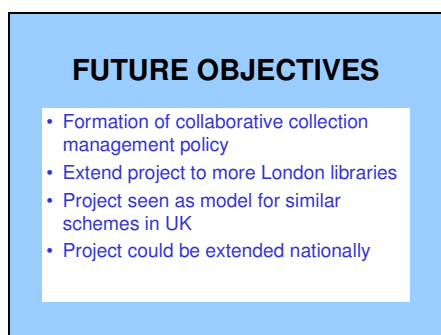
The Wellcome

THE WELLCOME TRUST

MAPPING MEDICINE:
Collaborative collection
management for biomedical
resources

It is also important to mention here this project has strong links with another pilot project that is funded by The Wellcome Trust called, Mapping Medicine: collaborative collection management for biomedical resources. The BLCPP project database will provide a link to The Wellcome's project. The Wellcome scheme replicates the partners' of the BLCPP project, although fewer in number and it focuses on collection, retention, disposal and access policies, rather than current subscriptions.

FUTURE OBJECTIVES



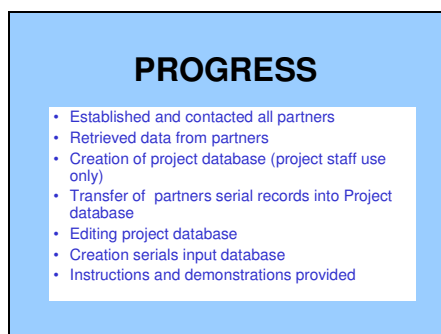
It is hoped that the project will be able to extend its objectives to most libraries in the London region wishing to join the scheme, who specialise in any aspect of biomedicine including health management. Also the methodology utilised for the survey and linking it to current development policies could be seen as a model for similar schemes in the UK. As the RCN and the RCS to name just a few, provide a service to their members all over the UK, this could be used to extend the scheme nationally. Although these objectives are out of scope for this project, it is hoped that the project has been able to demonstrate the possibilities of achieving them in the future.

To conclude then, the Biomedical Collaboration in London project in trying to lay the foundations for the development of a collaborative collection management policy to become possible, will enable the partner libraries to provide a greater variety of biomedical resources, to their users' in a way that will allow them greater flexibility, when it comes to decisions on what materials can be afforded for the following year. At the same time they can be safe in the knowledge, that if certain items have to be disposed of or cancelled, to either make more space or due to financial constraints, there is another library that has these materials in stock, from which they can gain the articles they need.

It is imperative then, that the two databases are kept up to date during the project and after it has come to the end of its duration, if we are to make all the work that has and needs to be completed worthwhile.

In any case the database will be kept available on the WWW as a 'snapshot' for a year after the end of the project

PROGRESS TO DATE



I will now bring you up to date with my progress for the project. I started this project in March 2001 and from the early beginnings of establishing whom our partners are and my contacts, I have managed to accumulate a reasonable amount of data upon each of them. To begin with, we needed some basic information, like how many sites did each of them have, what library management system was used, total number of current subscriptions, were their access and document delivery policies displayed on the web etc.. This process of investigation, gave us an insight into the scale of the work involved.

While I was collecting my data, Mark Fisher the project IT Officer, investigated ways to transfer IC serial holdings from UNICORN into a project database, which was under development. It was decided that a previously conducted overlap study of IC periodical titles would be used, as the basis for the project data. All serial records from Unicorn were loaded into the Access 97 project database and matched against the overlap study, at this stage in an attempt to limit the data to biomedical titles.

This database is primarily for the use of project staff and allows me to carry out all the editing and checking that I need to do. Data from other sites is now being loaded. The resultant database will be made available in a different format on the World Wide Web. Mark has begun creating the World Wide Web version.

I have started editing the project database, which has taken a while, as there have been a number of problems associated with the development and design of it. I started on a list of IC journal titles from UNICORN, that didn't match and investigated why they didn't, were the titles relevant to the project and any missing information. I will have to repeat this work when we have all the partners' serial data. Presently we are editing IN/ICH & EDI. The editing of IC, QMC, KF, RCVS and RCS journal titles is now finished.

We have created another database in Access, purely for those partners that do not have electronic records, to input their serial holdings, which will provide us with only their current stock and allow for a smooth transfer of their serials data into the project database. I have provided written instructions for the partners of how to input the data and supplied demonstrations of this particular database.

Finally Mark has written an API script to enable the partners' with electronic records in UNICORN, to extract their serial data and then load it into the project database. We have extracted eleven of the partners' data. And that then, brings you up to date with what the project is about and the work that has been started and completed so far.